



Contact us on:

07967627945 or

soapbox@pickardonline.co.uk

Introduction

So after the success of 2022, there was absolutely no reason why we wouldn't run the event moving forward. 2022 was dubbed the UK's leading event in the gravity world.

The track has proved be a huge hit with gravity racers from a multitude of disciplines.

Prize Categories

We award prizes to competitors in recognition of their dedication to the day.

The categories are:

1. Cart (Soap Box) (1st, 2nd & 3rd)
2. SpecKart (1st, 2nd & 3rd)
3. Gravity Bike (1st, 2nd & 3rd)
4. Best Turned Out
5. Best Engineered
6. Best Race Moment
7. Overall Winner
8. Wooden Spoon
9. Maddest Skater
10. Looniest Luge

How to enter

1. Read the Rules & Regulations on pages 2 - 5 of this race pack
2. Visit our website www.gravity-games.co.uk and follow the "Enter a team now" button. This will direct you to our online shop where you can simply select the team entry costing £100 per team of four.
In addition, we have included team camping/hospitality for the weekend at £40.00 for up to 4 people.
3. We will not accept responsibility for any entries which we do not receive, or for any entries which are lost, delayed or become corrupted during electronic transmission. Even if you have proof that you have submitted an entry, this will not constitute proof of receipt by us
4. Places are limited; any unsuccessful applicants will be refunded in full their £100.00 deposit.

Rules & Regulations 2023

Introduction

These Rules and Regulations apply to all entries. They have been designed for your safety and the safety of others around you, based on best practice, common sense and advice received. They enable us to run the event effectively for the maximum benefit of all – please ensure you read them carefully and comply with the details. They will be enforced! Thank You.

The course is a 0.9 mile sprint at the famous Harewood Hill Climb. The route will start at the top of the paddock where all the Gravity Racers will be held. The course then twist and turns down the infamous hill climb track but in reverse (for obvious reasons). There will be at least four additional runs per Gravity Racer which each team member will drive. Each run will be timed, but the winner will be calculated over the total of all four timed runs.

1 – General Conditions

- 1.1. Teams shall be comprised of four persons made up of one team captain and three team members, all of whom must satisfy conditions 3.2 and 3.3. Team captains shall be designated on the entry form and shall be responsible for ensuring compliance with these conditions by their team members. Team captains accept responsibility for any team members under the age of 18 years.
- 1.2. The **closing date** for applications is **4th August 2023**. Since numbers are limited to 60 teams please submit your application as soon as possible to avoid disappointment! Places are allocated on a first come first served basis. Only fully complete applications will be processed.
- 1.3. It is hoped that each team will raise as much additional money as possible, in donations, sponsorship or collections.
- 1.4. Registered charities may enter a team and raise money for their own cause but a £100.00 entry is still applicable. The total figure raised is to be submitted to Pickard Events so that this can be added to the event total.
- 1.5. Notwithstanding condition 1.3, all proceeds of the Gravity Racing will belong to Pickard Events to be used in its absolute discretion (subject to any agreement made under condition 1.4) including (without limitation) covering the costs of running the Gravity Racing.
- 1.6. Brightly coloured Gravity Racer, sponsorship and advertising are actively encouraged. We also appreciate it if the team name is painted onto the Gravity Racer.
- 1.7. Every team must comply with these Rules and Regulations in full and any variations which Pickard Events may make in its entire discretion at any time and will notify to you in accordance with condition 1.24..
- 1.8. Registration will commence at **07:00hrs** on the day of the event, followed by inspection by scrutineers and walking the course.
- 1.9. Any failure to observe and comply with these Rules and Regulations may lead to disqualification or penalties entirely at Pickard Events discretion.
- 1.10. The organisers reserve the right to reasonably refuse entry to any team without an explanation or any liability arising. Their decision will be final.

- 1.11. An entry fee of **£100.00** is required with each team entry.
- 1.12. Gravity Racers and drivers can be scrutinised by the scrutineers to inspect, test and otherwise satisfy themselves as to the safety of Gravity Racer, drivers and other equipment in the pits, and prior to each run and at any other time, before being allowed to participate. If any soap box, driver or equipment fails to meet scrutineers required standards the team may be disqualified.
- 1.13. Notwithstanding condition 1.12, no expressed or implied warranty of safety or guarantee against injury, including (without limitation) to team members, drivers or spectators, shall arise from a Gravity Racer having been scrutinised or being allowed to compete.
- 1.14. Drivers **MUST** provide proof of their own insurance.
- 1.15. After crossing the finishing line drivers shall enter the designated run off area and apply their brakes and quickly depart from the track under the marshals' instructions.
- 1.16. Practice runs will not be timed, including by team members.
- 1.17. Teams will be allocated a "pit area" where you will hold your Gravity Racer. You are encouraged to bring your own gazebo or tarpaulin to cover your equipment.
- 1.18. Team members must be 16 years or older on the day of the event. **We regret that due to the nature of the event children under the age of 16 will not be permitted to run the race route.**
- 1.19. A trailer train facility will be used to transport Gravity Racer from the pits to the designated paddock. No other vehicle will be allowed on the track.
- 1.20. Teams' allocated Gravity Race numbers must be prominently displayed on the Gravity Racer on all four faces.
- 1.21. The organisers reserve the right to disqualify any or all participants that demonstrate or teams whose members (or any of them) demonstrate inappropriate and/or unsafe conduct including (without limitation) intoxication or nuisance.
- 1.22. All teams must send a photograph or, if still under construction, a diagram of their Gravity Racer for the scrutineers and web posting by 31st July 2023. Structural changes made after this date must be brought to the scrutineers' attention. Any changes deemed unsafe may result in the Gravity Racer being withdrawn from the competition at any time.
- 1.23. This is a public event and all participants agree to their photographs being taken and used in the media without anyone having to make any payment to or seek specific permission from a participant.
- 1.24. Any revisions to these rules and regulations will be brought to the attention of team members during the drivers briefing and by displaying copies at the venue. Team members shall be responsible for ensuring that they are familiar with the latest version of the rules and regulations.
- 1.25. All teams accept the risk that unforeseen circumstances, including (without limitation) adverse weather, closure of the venue, discontinuance in the case of an accident or an act of God, may cause the soap box derby to be relocated, delayed, postponed or cancelled without prior notice and without any liability arising as a result.

2. – Technical, Design and Structural Regulations

- 2.1. Maximum length of Gravity Racer must be **2500mm** measured from front to rear of Gravity Racer.
- 2.2. Maximum width of Gravity must be **1500mm** measured from outside to outside.
- 2.3. No protuberances outside these dimensions will be allowed.
- 2.4. Drivers must remain seated in their Gravity Racer at all times and shall not (unless in the case of an emergency) disembark from their gravity racer until it has come to rest.
- 2.5. There must be two wheels, fitted with pneumatic tyres or solid tyres, one on; all wheels should be in road contact during normal running. Ground clearance should be sufficient to clear the uneven road surfaces – **50mm minimum is recommended**.
- 2.6. **Good** brakes are essential (**disc brakes are recommended**) and will be checked. Braking must operate on at least two wheels on the same axle and be effective to hold stationary on the start line and bring the Gravity Racer to a halt from speed. Seats must be securely bolted or welded to Gravity Racer.

- 2.7. Any steering column, brake lever or other protrusion must be designed and fitted such that the risk of puncture injuries is minimised. **A padded steering wheel is recommended.**
- 2.8. Bodywork and controls must not impede the drivers in exiting the vehicle unaided.
- 2.9. Any doors or hatches required for driver access must be readily operated from both inside and outside the vehicle without the use of tools.
- 2.10. Only propulsion by gravity shall be used – i.e. no motors, no pedals & no stored potential energy. See condition
- 2.11. No loose weights will be allowed inside or outside Gravity Racer.
- 2.12. Seatbelts are not mandatory, **but are strongly recommended.**
- 2.13. It is **recommended that gravity racers are fitted with a substantial roll bar and all welding and general construction should be of a good standard.** The roll bar should be at least 35mm above the driver's helmet when the driver is seated normally in the vehicle.
- 2.14. Steering must not have excessive free play or any characteristic tending to promote instability.
- 2.15. All Gravity Racers must be fitted with a towing eye to enable towing in tandem with other carts up hill. i.e. mounted centrally front and rear of the Gravity Racer. Failure to include will mean that you will not be allowed to compete.
- 2.16. All Gravity Racer parts must be securely fixed to Gravity Racer at all times. Any Gravity Racer seen to be losing parts will be removed from the competition. Should any parts detach from the Gravity Racer you must inform a marshal as soon as it is safe to do so.
- 2.17. Gravity Racer may fail scrutiny on any of these regulations or any other matter at the scrutineers' sole discretion, leading to disqualification at any time and without any liability arising from such disqualification.

3 – Safety Regulations

- 3.1. The purpose of the event is to have fun, but the safety of the team, supporters and spectators is paramount throughout the day, and accordingly, the organisers of the Harewood Gravity Games reserve the right to amend these rules or go above and beyond their guidance. **Please note that participants are not specifically covered by the organiser's insurance. Every effort has been made to make the competition safe but it should be recognised that the competition is physically challenging for participants and is undertaken entirely at each participants own risk.**
- 3.2. **YOU MUST TAKE OUT YOUR OWN INSURANCE, ONE SUGGESTED SITE IS www.sportscoverdirect.com/insurance/soap-box-racing-insurance/ In some cases, membership of associations will provide you with a valid insurance policy.**
- 3.3. All team members must sign a disclaimer as part of the entry form and these will be checked to ensure all team members present on the race day have signed.
- 3.4. Team members under the age of 18 must complete the parental consent form as part of the entry form. (N.B We regret we can no longer let under 16's compete)
- 3.5. All Gravity Racers must be constructed with pedestrian friendly sympathies. Sharp edges will not be permitted.
- 3.6. No glass or other materials that would shatter or cause injuries to drivers and spectators in the event of a crash should be used in the construction of the Gravity Racer.
- 3.7. All drivers must wear a crash helmet approved to BS 6658 standard (motor cycle helmet) or higher and appropriate gloves. Clothing must be capable of withstanding a spill on tarmac or concrete therefore long sleeves and long trousers are compulsory and knee and elbow pads are optional but recommended. **No bare limbs will be allowed. We would highly recommend motorbike leathers or motorcycle jacket and trousers.**
- 3.8. All drivers must attend the drivers briefing.
- 3.9. It is recommended that all drivers walk the course.
- 3.10. **ALL FOUR team members are permitted to be drivers on the race day.** The purpose of this run is to enable the drivers to get the feel of the course and their Gravity Racer. The run will not count in the timing competition.
- 3.11. Team members can opt out of a run. A minimum of three timed runs by three team members must be completed by each team to post a final team aggregate. In the case

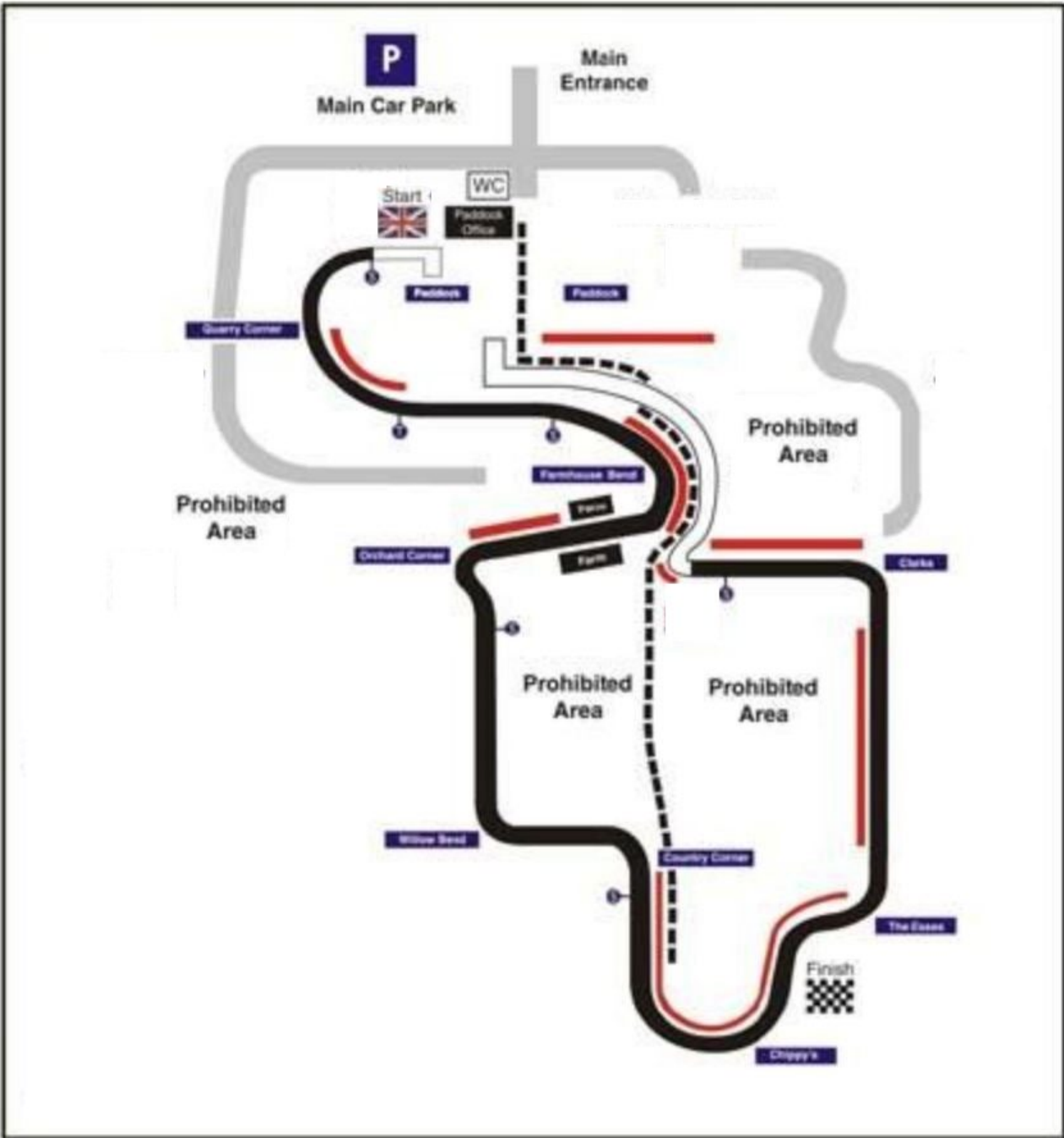
of a team member opting out of their run, the final team aggregate will be calculated by applying the slowest run time achieved by the other three team members as the fourth team member's run time.

- 3.12. The organiser's and scrutineer's decision is final. Scrutineers will have full access to the Gravity Racer and component parts as required to carry out their duties.
- 3.13. In the event of a driver failing to complete a run for any reason the organisers can use their absolute discretion to calculate a final result for the team, which may include (without limitation) disqualification or application of a hypothetical time.
- 3.14. Teams are responsible for the ongoing risk assessments on their Gravity Racer during the event and are obliged to report any change in risk to the scrutineers.
- 3.15. In the event of an accident the organisers shall use their absolute discretion in relation to the management and ongoing progress of the event. Teams will accept and comply with any directions or requests made by the organisers (acting reasonably).
- 3.16. No expressed or implied warranty of safety shall result from the publication of or compliance with these rules and / or regulations. This publication is in no way a guarantee against injury to team members, supporters or spectators.

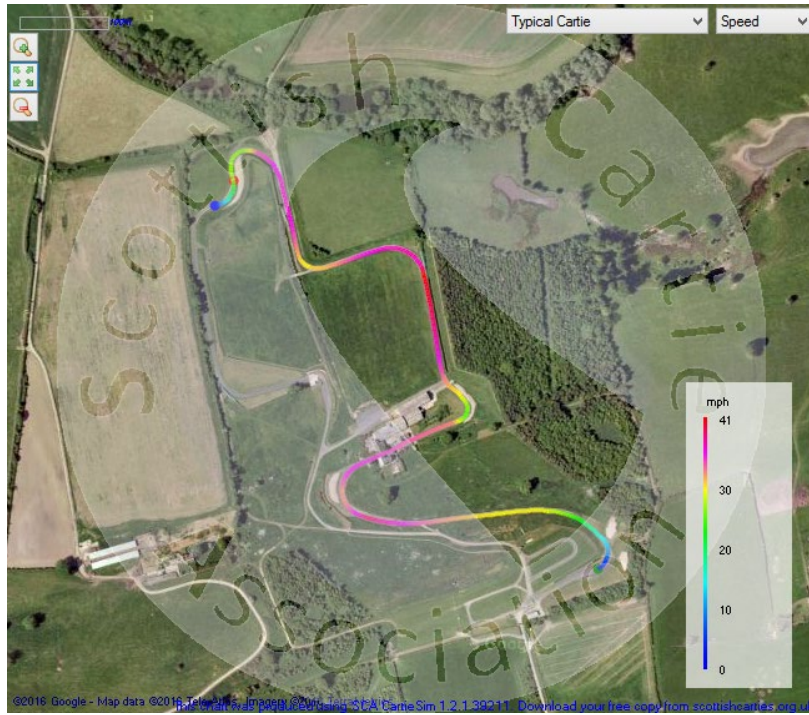
Scrutineering will be available from Friday evening and you are encouraged to camp and join the drivers gathering.

On Saturday registration, scrutineering, and inspection will start 7.00am

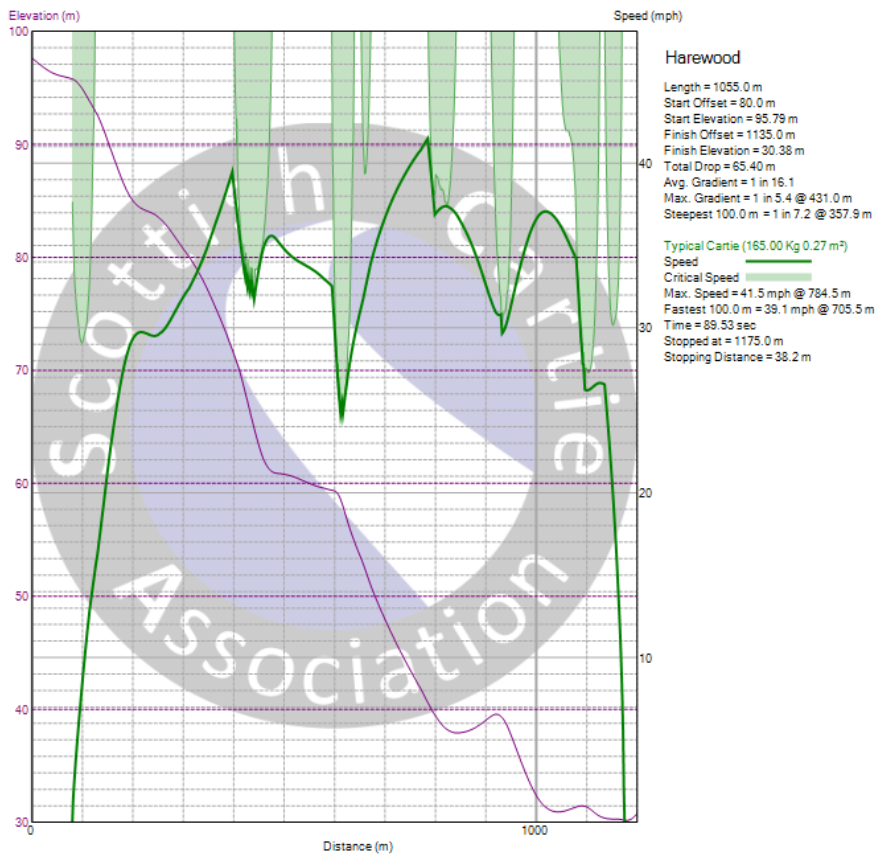




Gravity Speed Map



Gravity Speed Data



This chart was produced using SCA CartieSim 1.2.1.39211. Download your free copy from scottishcarties.org.uk.